

CORNER RECORD

Agency Index CR23-079

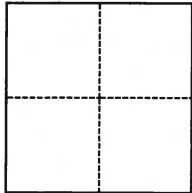
Document Number 030-034-17&18

City of Mill Valley County of Marin, California

Brief Legal Description LOTS 8 & 9 "UNRECORDED MAP OF EL CERRITO TRACT, BLOCK 2

CORNER TYPE

COORDINATES (Optional)



- Government Corner
- Meander
- Rancho
- Control
- Property
- Other

Date of Survey _____

N. _____ E. _____

Elevation _____

Units Metric U.S. Survey Foot

Horizontal Datum _____

Zone _____ Epoch Date _____

Vertical Datum _____

Complies with Public Resources Code §§8801-8819

Complies with Public Resources Code §§8890-8902

PLS Act Ref.: 8765(d) 8771 8773 Other:

Corner/Monument: Left as found Established Rebuilt Pre-Construction

Found and tagged Reestablished Referenced Post-Construction

Narrative of corner identified and monument as found, set, reset, replaced, or removed:

See sheet #2 for description(s):

Found monuments as shown on Record of Survey 2009 at page 32. Set 1/2" rebar with pink cap "LS947" and a nail and brass tag "LS9471". Revised (see sheet 2)

SURVEYOR'S STATEMENT

This Corner Record was prepared by me or under my direction in conformance with

the Professional Land Surveyors' Act on September 11, 2023

Signed _____ P.L.S. or R.C.E. No. P.L.S 9471



COUNTY SURVEYOR'S STATEMENT

This Corner Record was received September 11, 2003

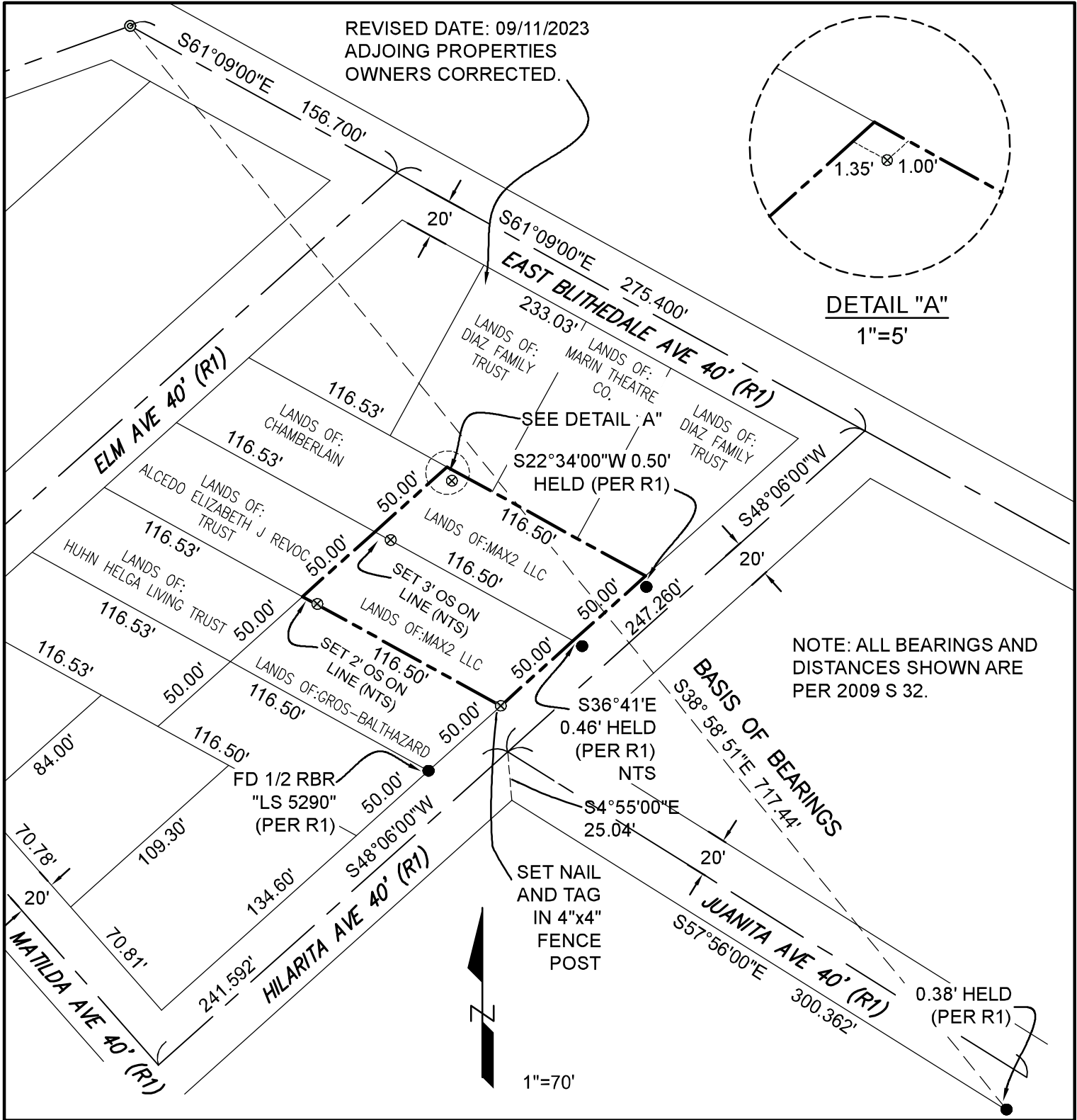
and examined and filed September 14, 2003

Signed T.W. Park P.L.S. or 8176

Title County Surveyor

County Surveyor's Comment





REVISED DATE: 09/11/2023
ADJOINING PROPERTIES
OWNERS CORRECTED.

DETAIL "A"
1"=5'

NOTE: ALL BEARINGS AND
DISTANCES SHOWN ARE
PER 2009 S 32.

CORNER RECORD

LANDS OF MAX2, LLC
(DN:18-034631 & 19-004152)
(APN 030-034-17 & 030-034-18)

CITY OF MILL VALLEY
MARIN
COUNTY CALIFORNIA
CAPSTONE LAND SURVEYING, LLP
926A DIABLO AVENUE, #526
NOVATO CA 94947
(415)493-8713

LEGEND

- ⊙ FOUND STREET MONUMENT 2.5" BRASS DISC & PUNCH, NO STAMPING PER (R1)
- FOUND MONUMENT AS NOTED PER (R1)
- ⊗ 1/2" REBAR SET WITH PINK CAP "PLS9471" unless otherwise noted.

— PROPERTY BOUNDARY

(R1) SURVEYS 2009 PAGE 32

BASIS OF BEARINGS:
THE BASIS OF BEARINGS OF
THIS SURVEY IS S38° 58' 51"E
BETWEEN FOUND
MONUMENTATION PER (R1)